

Management System and Quality Assurance Manual

MSP-0003

Rev: 12/19/2023

Owner: QA Manager

1/5

VT Facility: 175 Hercules Drive, Colchester, Vermont 05446

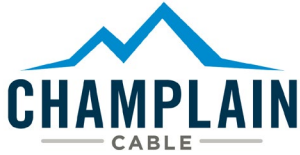
TX Facility 1: 9560 Plaza Circle, El Paso, Texas 79927

TX Facility 2: 9600 Pan American Dr. El Paso, Texas 79927

CHAMPLAIN CABLE CORPORATION

MANAGEMENT SYSTEM

QUALITY ASSURANCE MANUAL



Management System and Quality Assurance Manual

MSP-0003

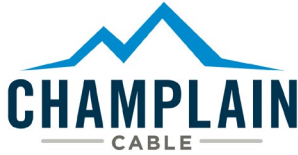
Rev: 12/19/2023

Owner: QA Manager

2/5

Table of Contents

SECTIONS	TOPIC
4.0	Scope of Business
4.1	Scope of Business – El Paso
4.2	Quality Policy
4.3	Organization Chart
4.4	Organization Chart – El Paso
4.5	Interested Parties
4.6	Interested Parties – El Paso
4.7	Processes
4.8	Processes - El Paso
4.9	Business Plan
4.10	Business Plan- El Paso
4.11	Linkages between Processes and IATF
4.12	Customer Specific Requirements
4.13	Procedures



4.0 Scope of Business:

The scope of the Champlain Cable business includes the sales, development, and manufacturing of specialty wire and cable for automotive, commercial vehicle, industrial, military, marine, oil, gas, and nuclear applications. The manufacturing performed at our facilities includes wire and cable that is irradiation crosslinked.

The facility is certified to ISO 9001:2015 and IATF 16949:2016 quality systems. In support of these activities Champlain Cable supports and integrates our additional customer specific requirements into our management systems. Champlain Cable maintains all functions in support of manufacturing, including Sales, Marketing, Design and Development of new materials and products, Engineering, Planning, Purchasing, Quality, Maintenance, Human Resources, Business Planning, and Training. The site also provides support functions as needed to Champlain Cable El Paso facilities.

Design: Champlain Cable does hold design responsibility as it develops materials and products to suit customer applications and solve problems including process design. Champlain Cable also manufactures products to customer requested designs.

4.1 Scope of Business – El Paso:

The scope of the Plaza and Pan American facilities is limited to manufacturing and activities directly supporting it, including: Engineering, Human Resources, Training, Packaging, Calibration, and Maintenance. There are a number of activities that are supported by the Champlain Cable Corporate offices in Colchester, Vermont that include: Continuous Improvement, Corporate Quality, Contract Review, Customer Service, Facilities Management, Finance, Information Technology, Internal Audit Management, Laboratory Services, Logistics, Management Review, Marketing, Policy Making, Process and Product Design, Purchasing, Quality System Management, R&D, Sales, Strategic Planning, Supplier Management, Testing, and Warranty Management.

The plants are compliant to and maintain certification to ISO 9001:2015 and certification to IATF 16949:2016.

The manufacturing performed at the Plaza and PanAm facilities is wire and cable that is irradiation crosslinked for specialty applications. These applications are predominantly in the automotive and commercial vehicle markets with some braiding work and the potential for work in the marine and telecommunications markets.



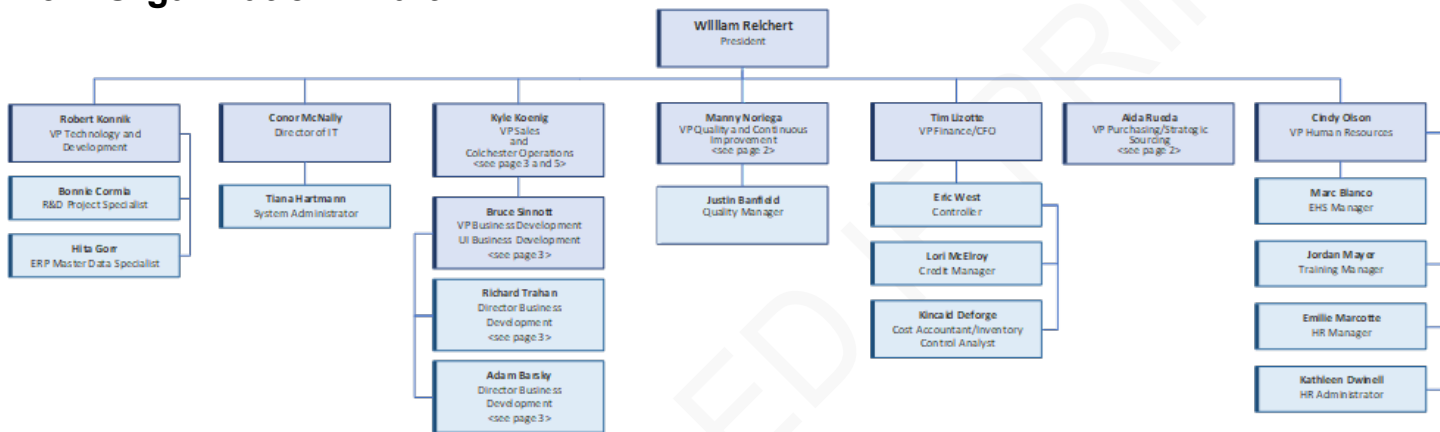
4.2 Quality Policy:

Taken directly from MSP-0007:

Champlain Cable Corporation Quality Policy is:

- Continuous Improvement
• Involving All Employees
• To Meet the Customer's Expectations
• While Meeting Our Financial Goals

4.3 Organization Chart:



Note: further details located in document HRR-001

4.4 Organization Chart – El Paso:

Full documentation available to internal parties in document HRR-001 page 4.

4.5 Interested Parties:

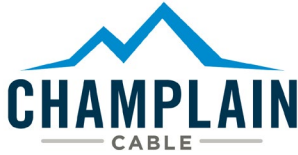
Interested parties and expectations can be found through the following link.

4.6 Interested Parties – El Paso:

Interested parties and expectations for El Paso can be found through the following link.

4.7 Processes:

A process flow chart can be found in the following link for those with internal access. The process description and metrics can be found in the following link for those with internal access. Full descriptions can also be found there including major processes.



4.8 Processes – El Paso:

A process flow chart for El Paso can be found in the following [link](#) for those with internal access.

The process description and metrics for El Paso can be found in the following link for those with internal access.

4.9 Business Plan:

The current business plan can be found at the attached [link](#) for those with internal access. This also addresses internal and external issues as well as quality objectives (as strategic objectives).

Each functional department performs situation analysis, including SWOT analysis, to identify risks and opportunities. As part of the annual planning process, action plans are identified and assigned to address risks and opportunities. Quarterly business reviews include action plan updates and evaluation of effectiveness against planned goals.

4.10 Business Plan – El Paso:

The current El Paso business plan can be found at the attached [link](#) for those with internal access.

4.11 Linkages between Processes and IATF

Linkages between the business processes and IATF can be found in [MSR-0003](#).

4.12 Customer Specific Requirements:

All customer specific requirements located within the quality management system can be found with the following [link](#) for those with internal access.

4.13 Procedures:

All procedures can be found on the company [intranet](#), for those with internal access. Major procedures as part of processes can also be found in the process descriptions.